

Introduction

PC Delta Technologies cc was founded from JPC Omega Tech Consulting cc, and has a core business focus as to client's requirements in the software and web site environments. We also assist clients in determining the best solution for their business regarding computerized management systems (CMMS).

We have been in business for the past 7 years assisting clients such as African Explosives, Chemserve Systems, TMA Systems, Kelvin Power, DCD Dorbyl, Botswana Ash, iGrade and National Brands, to name a few, regarding the following assignments;

- **Maintenance Management Implementation and Configuration and Training** (AEL, Chemserve Systems, DCD Dorbyl, National Brands)
- **Software support and Training on Aramis, Maximo...** (AEL, Chemserve Syetems, DCD Dorbyl, Botswana Ash, National Brands etc...)
- **Software development and interface** (iGrade, TMA Systems, Tonesat)
- **Procurement Processes and Processing** (Kelvin Power and Chemserve Systems)
- **Stores Management Software implementation and training** (AEL)
- **Labeling** (AEL)
- **Barcoding** (AEL)
- **Software and web application design.** (iGrade, TMA Systems)
- **Database Administration** (AEL, Chemserve Systems, DCD Dorbyl, National Brands, Botswana Ash)
- **Work Flow Procedures for Engineering** (Chemserve Systems)

We at PC Delta Technologies do not want to limit our services to software and maintenance management but sure want to make it our core focus as the experience of our personnel comes from 12 years thereof.

Our Services

Maintenance Management and Procedures

Maintenance is the function that needs to be implemented to improve production equipment performance, availability, efficiency and operability. To have maintenance systems is a costly luxury. We at PC Delta Technologies will assist any company to implement their maintenance strategy accurately and easily. Our aim is to improve the way maintenance department operate and give experienced advice as to software systems and implementations. We do;

- MSI (Maintenance Significant Item) Identification
- HBS (Hardware Breakdown Structure)
- Diagrams to represent HBS
- Coding Conventions
- Database Creation and Administration
- Stores and Inventory Implementation
- Procurement Procedures
- Maintenance Planning and Failure Analysis

Software Development and Support

Software has become a core entity in most domestic and corporate environments, its aim, to assist the company or person in creating, servicing, forecasting and managing their business. For the private individual it is sometimes to assist their personal management such as budgeting, community assistance and entertainment. We intend to assist the clients in their needs and create software or support their current software in that regard.

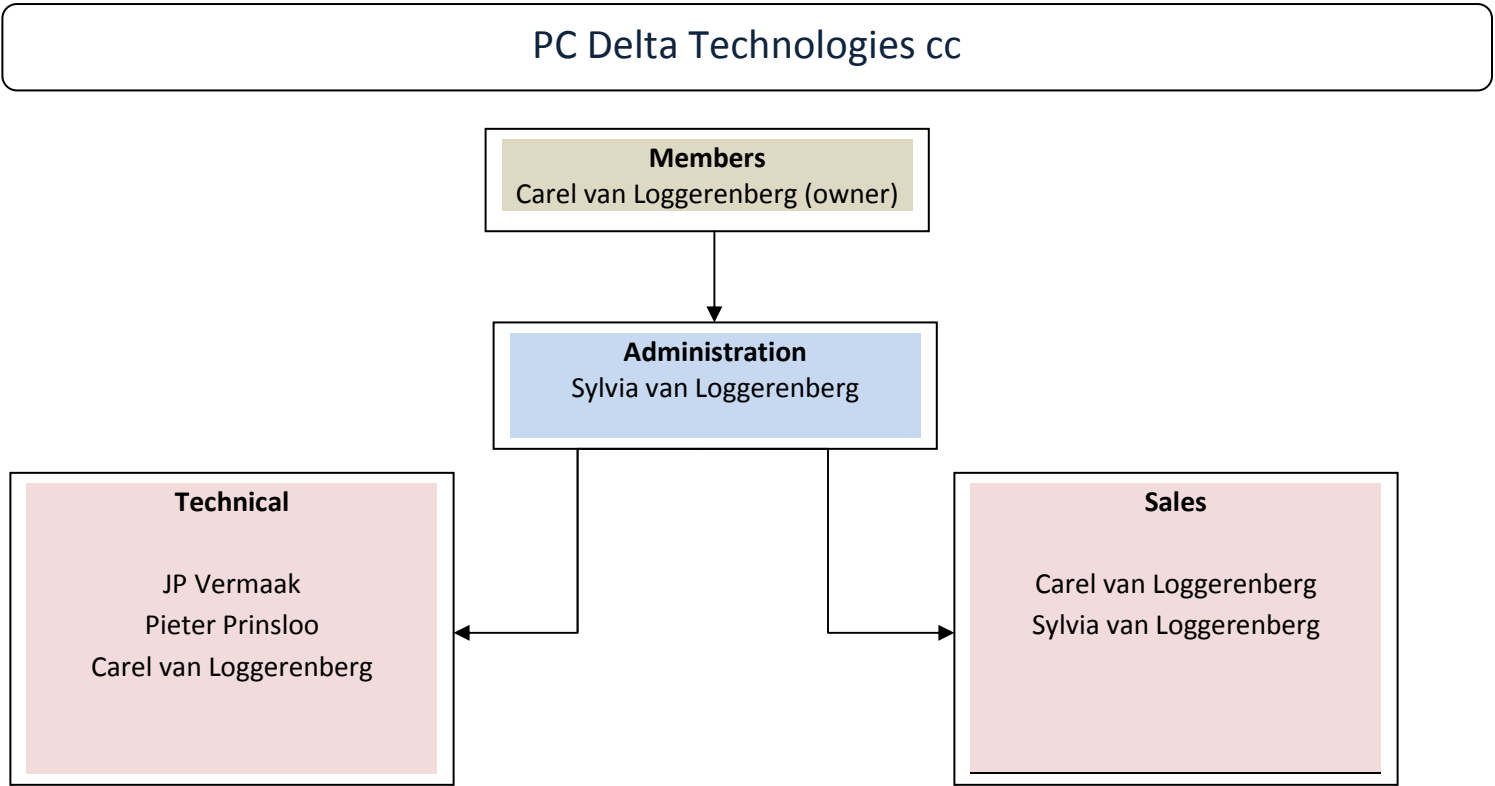
Technologies

As we all know, technologies in this current time is rapidly changing and adding value to the corporate and domestic environment. Technologies such as televisions, cell phones, RFID and all other electronics are changing by the day. Our aim in this regard is to integrate all technologies available into the software environment to assist the clients in growing their business. For example; when a client comes to us with a new concept that he/she would want us to implement, we will use all resources available to accomplish the goal, to provide the client with a quality system that is up to date with current technologies as affordable by the client.

Company Structure and Location

PC Delta Technologies has a basic company structure; our personnel will be available only on request for services.

The following diagram will be a good representation of the current structure we have in place;



We are situated in Centurion, Pretoria and Vanderbijlpark (Administration). Our Accounting Officer (Firm) is located in Vereeniging CBD (Jordaan Botha en Vernote).

Sow a thought and make a change